

MasterClaw Network Quality Monitoring

The precise information you need, when you need it.

Introduction

When both historical and real-time network data is available in a concise, comprehensible and customized way, its use extends beyond network operations and becomes business intelligence, of value to product managers, network architects and planners. Using MasterClaw your data provides a competitive edge, allowing you to make the most of your network investment.

Make the most out of your network infrastructure

Like in any other business operation, degree of resource utilization and the general operation efficiency are keys to the overall performance of network and service providers. Detailed performance data acquired from the network, comprehensive network oriented KPIs and advanced data warehouse functions allows for in-dept analysis of the network's performance. This ensures optimal use of available resources.

Core solutions areas

Each of our solutions has been designed to maximize the profitability of your existing infrastructure and meet the demands of the future. Operators can examine customized data views through an intuitive, web/browser-based portal, turning complex, technical network data into understandable operational information. Naturally, our OSS solutions are complemented by a full range of professional services.



Key Benefits

- Historical and real-time visibility
- Optimizes the availability of network resources
- Reduced operational costs as a result of simplified monitoring of complex converged networks
- Early problem detection – allowing preventative action before end-user services are impacted

Features

- Individually customized, web-based portal
- End-to-end monitoring across converged networks
- Real-time alarms on congestion and other abnormal network behaviors
- Dynamic self-adjusting alarm limits
- Network quality models for definition of internal SLAs
- Drilldown capabilities to historical signaling data for instant troubleshooting

Your individually customized KPI dashboard

The dynamic web-based portal is all about speed, efficiency and intuitive applications. Your network's customized quality KPIs are displayed on your individual dashboard using topology maps, or simple color-coded graphs – giving you an instant end-to-end overview of the network's performance. At a glance, the dashboard provides you with the precise control layer and network data you need to make quick decisions. And with the ability to log into your secure, customized view from any network PC, the information is available whenever you need it.

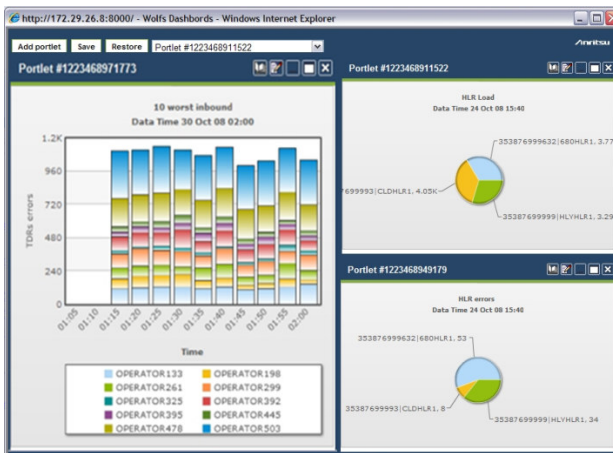


Figure 1: MasterClaw KPI Dashboard.

Prevention is better than the cure

MasterClaw provides real-time visibility, enabling network operations personnel to detect network problems and irregular traffic situations as they happen, so preventative action can be taken before end-user services are impacted. Through the seamless integration of our monitoring and troubleshooting applications, potentially dangerous trends are proactively identified – providing a fast, thorough means of analysis to establish both the cause and impact.

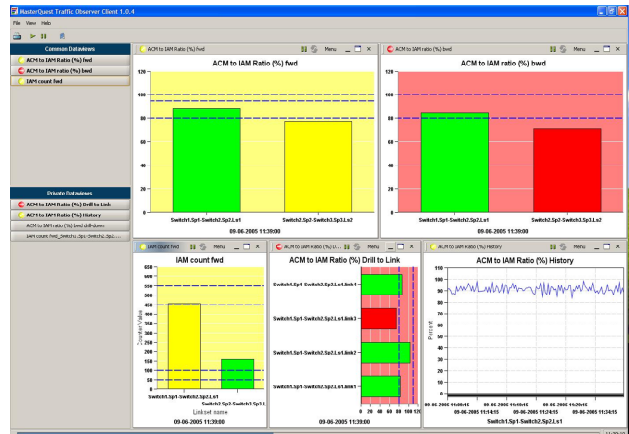


Figure 2: MasterClaw Traffic Observer.

Powerful, automatic trend spotting

Dynamic, self-adjusting alarms, clearly visible on the web-based portal, automatically alert you to hostile network traffic such as mass-calls, SPAM and hacker attempts – allowing preventative action to be taken before it affects your network and your customers. Anritsu's solution is able to identify emerging network intrusion patterns or trends and automatically make the necessary adjustments to protect the network.

Accurate forecasts and simple service quality overviews

Using a combination of real-time and historical data, fully customized, up-to-the-minute reports make trend analysis, route optimization and measuring service quality simple. Our Network Quality Monitoring solution is all about giving you more time to focus on providing superior customer service instead of navigating a maze of data.

Exceptional network insight, an innovative attitude and close, flexible working relationships with our customers – our network quality monitoring solution helps make you uniquely competitive.